

Chashitsu: Japanese Teahouse Model

Make Your Own Three Dimensional Tea House

Floor Plan

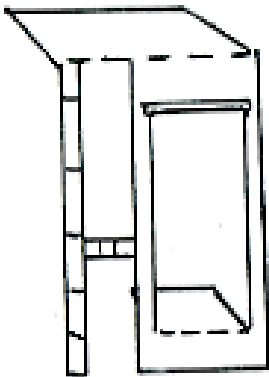
Cut out the floor plan. Fold on the dashed lines. Glue the corners of the bottom flaps to form a box. Glue the bottom of the box to a tagboard surface.

Teahouse Walls

Cut out each of the walls. Align dashed lines and tabs and tape the inside and outside of the wall back to back so that the illustrations appear on each side. Fold along all dashed lines. Cut out slots on walls 1, 2, 4, 7, 8.

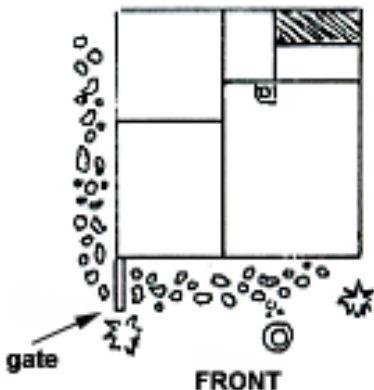
Special instructions for wall #6:

Carefully cut out the section with a large "X" on it. Bend on the dashed line. The result should loom like this:



Gate

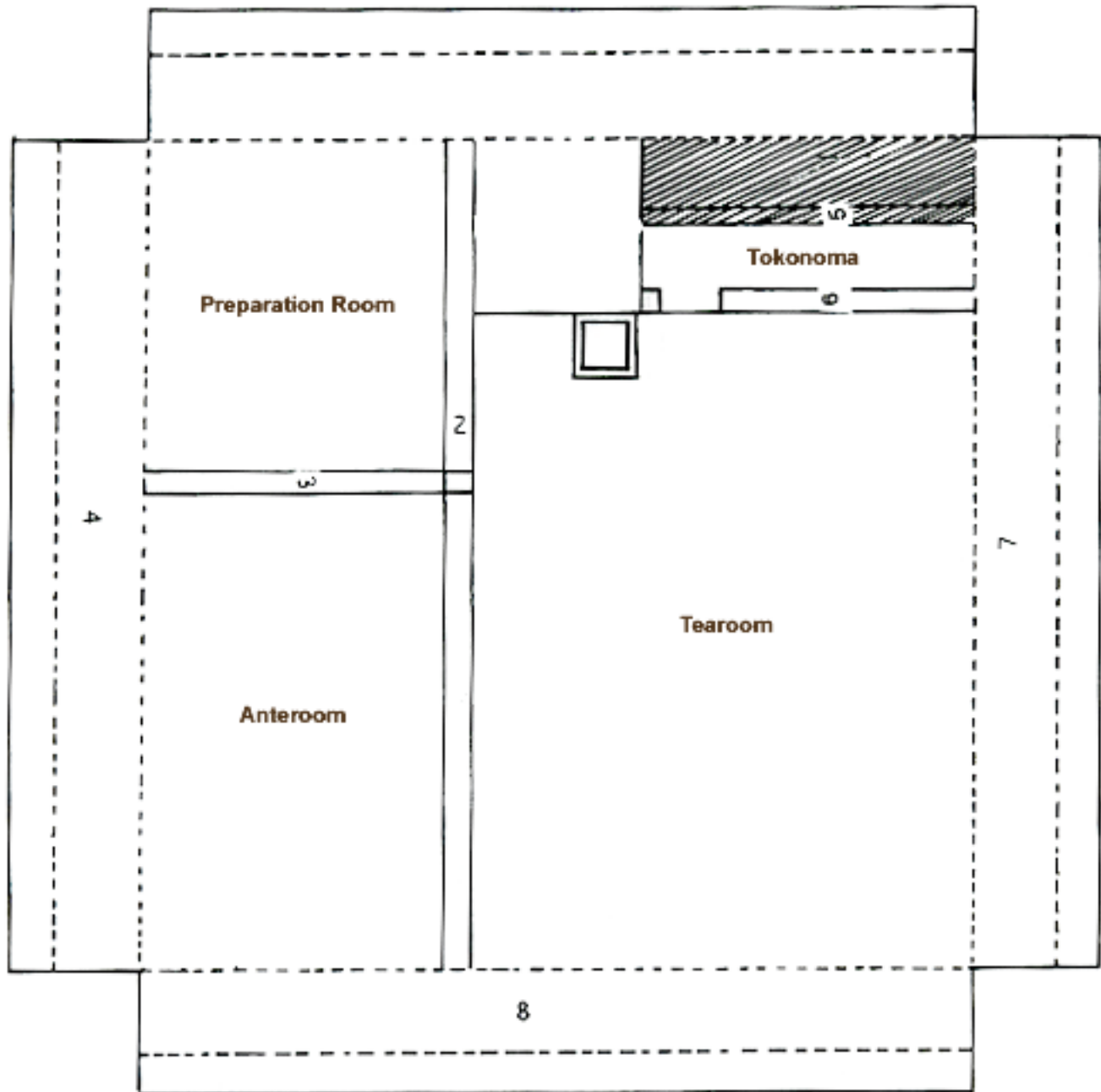
Cut out both sides of the gate. Tape both sides of the gate together. Fold on the dashed lines. Glue the gate next to the left side of the front wall. The gate is placed in the front, left of the teahouse as in this illustration:



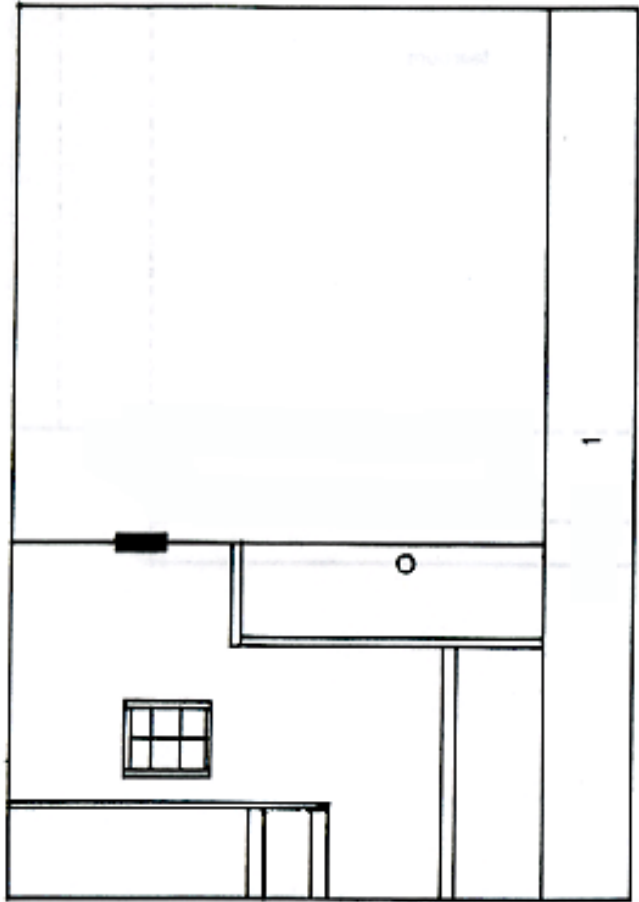
Please learn more about fun activities for all ages at
<http://www.asianart.org/asiaalive.htm>

Asian Art Museum, 200 Larkin St. San Francisco CA 94102

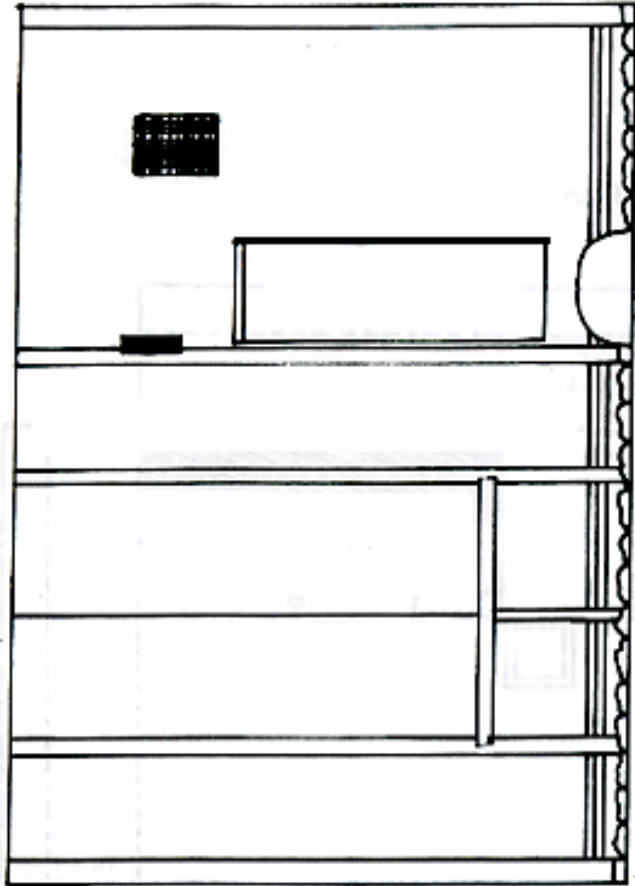
Floor Plan



Wall #1

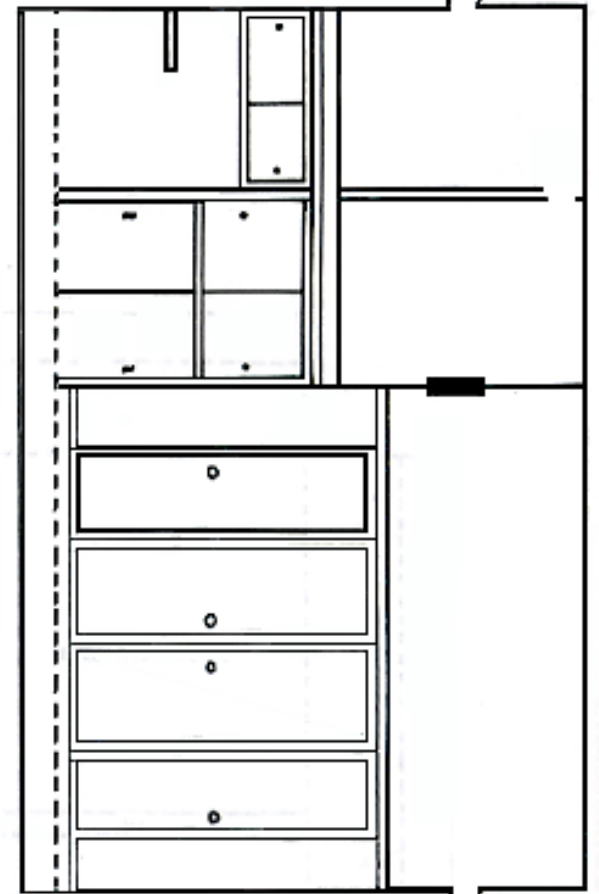
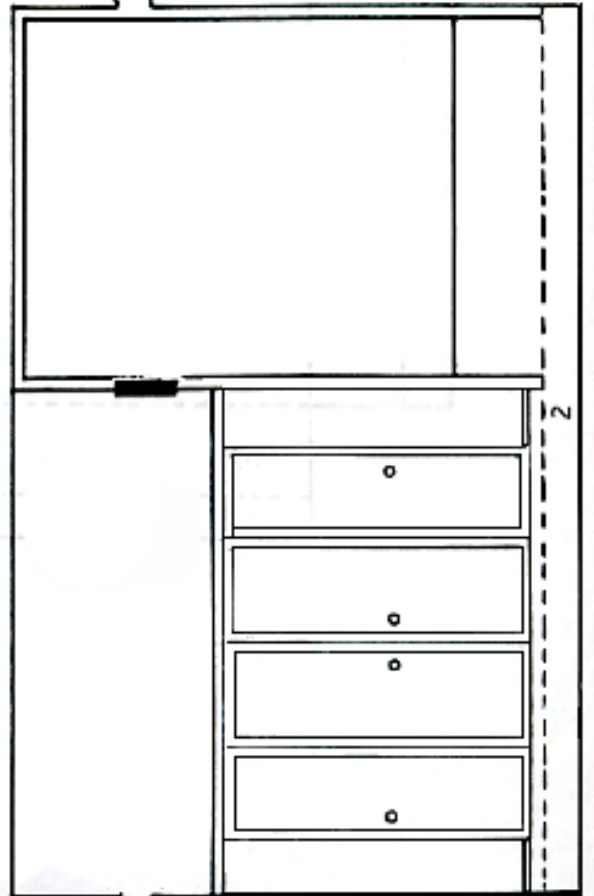


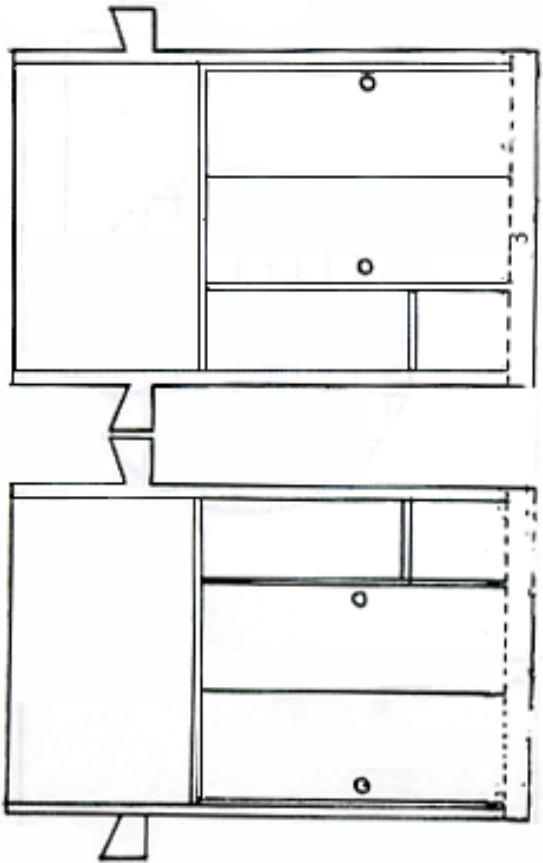
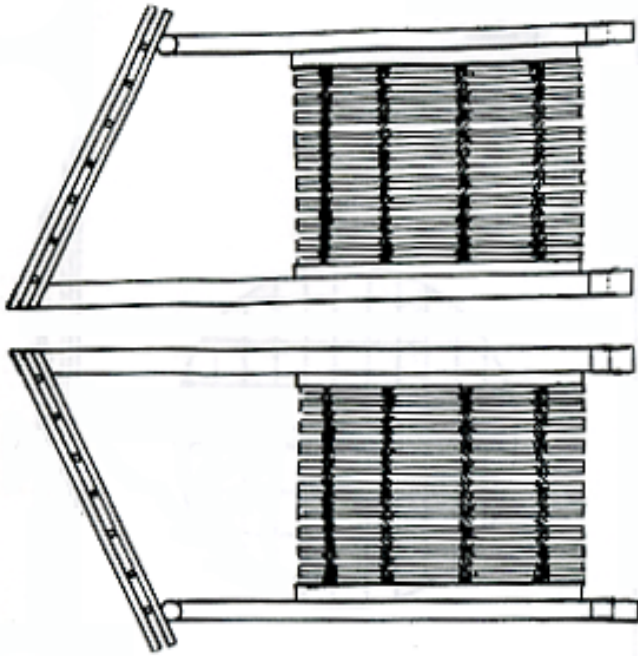
inside



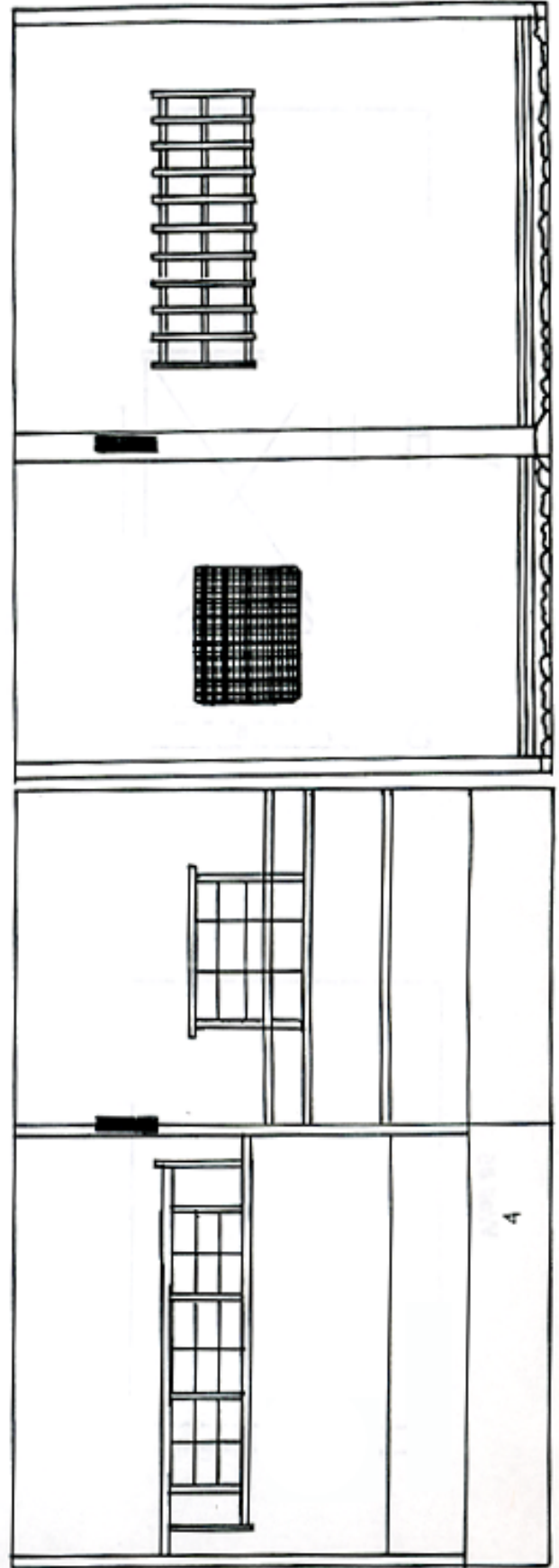
outside

Wall #2





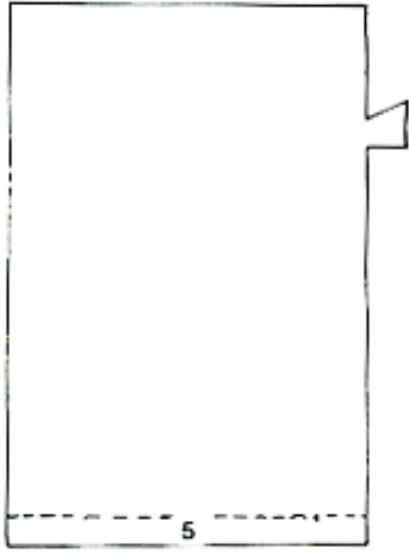
Wall #4



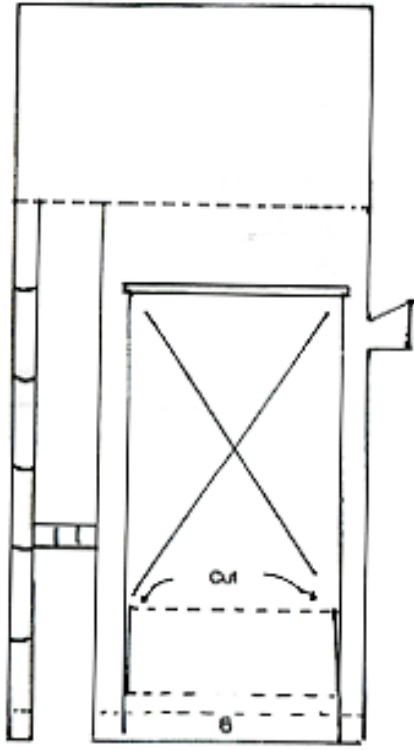
inside

outside

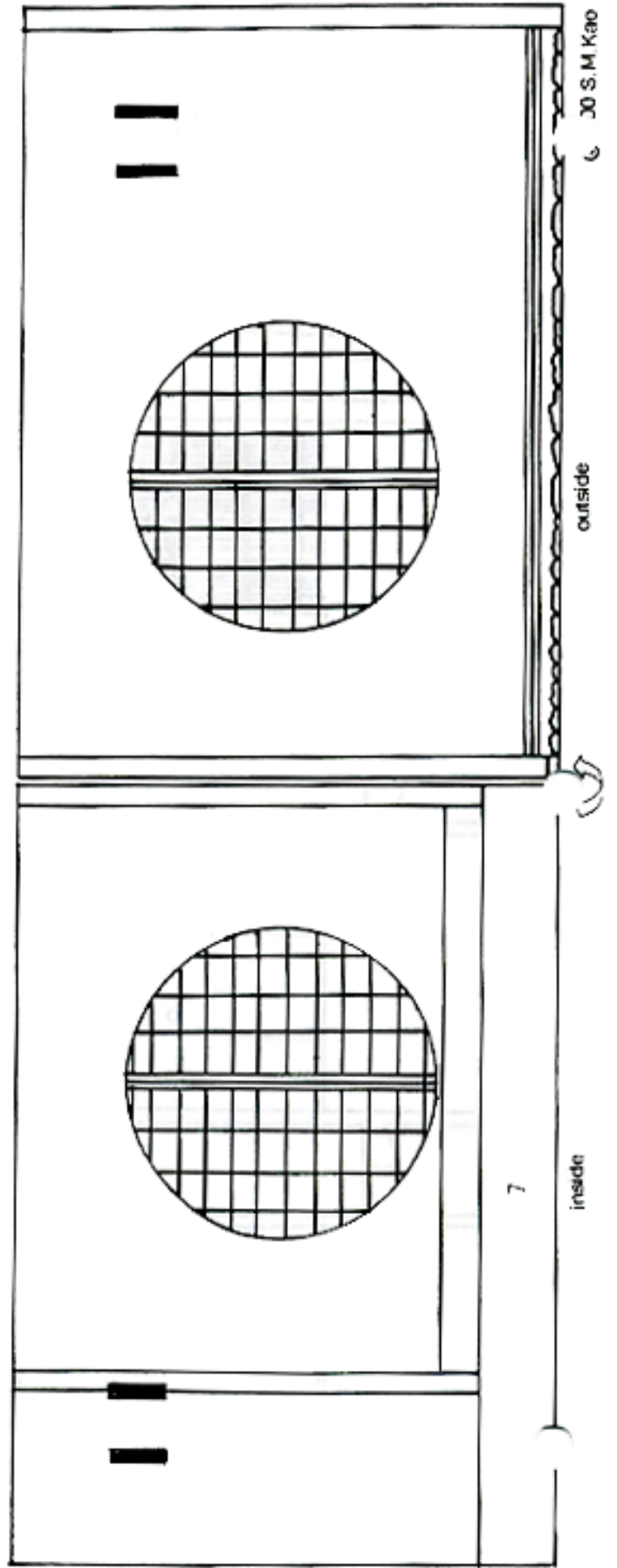
Wall #5



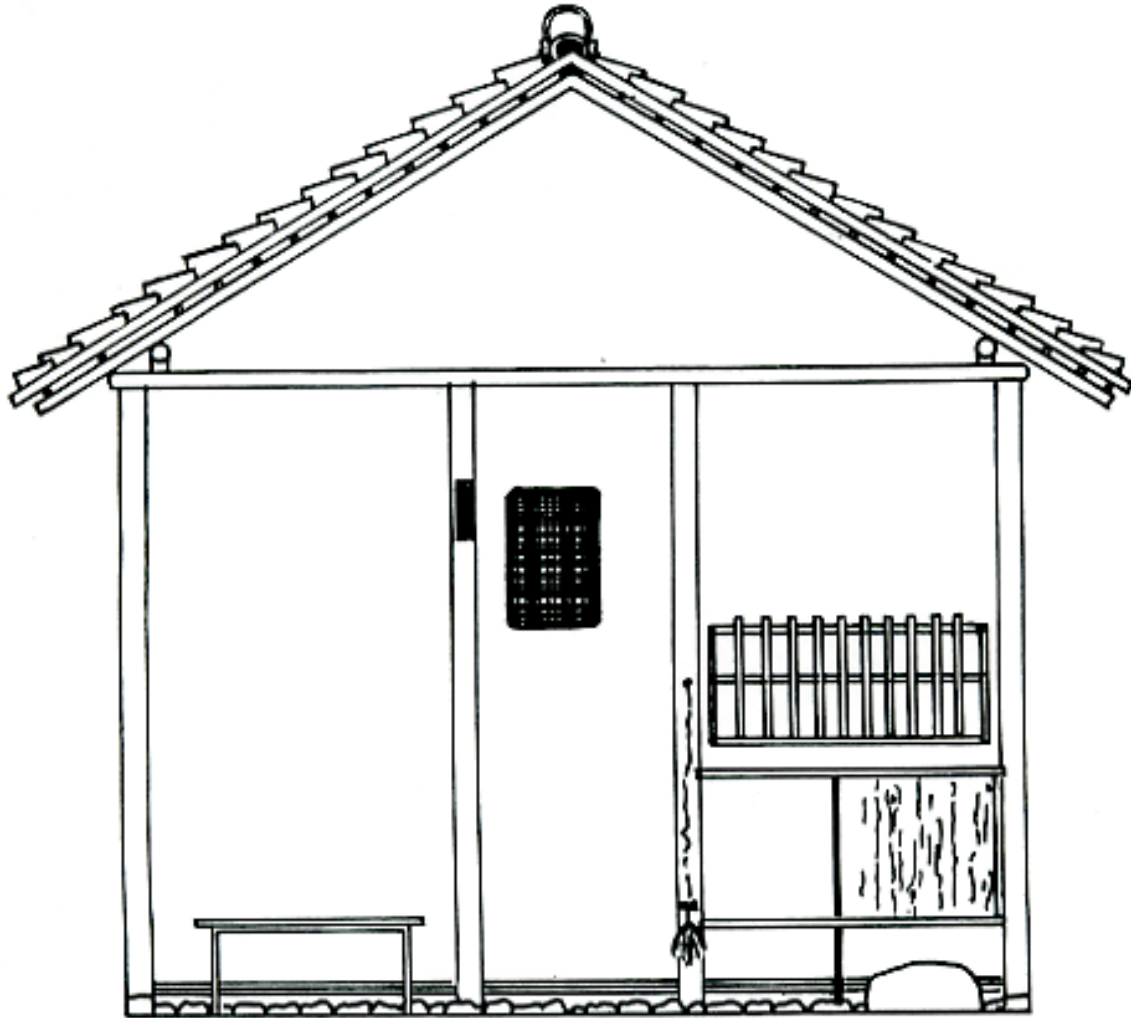
Wall #6



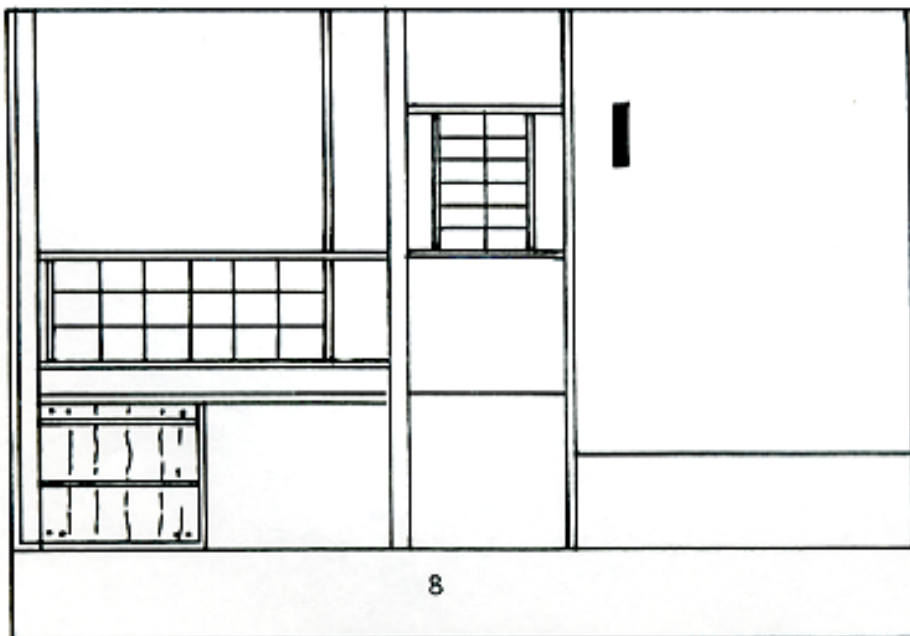
Wall #7



Wall #8



outside



inside